



# LIGHTHOUSE COMMUNITY HUB

*'Child poverty remains one of the biggest barriers to improving outcomes for young people in the UK today. There are too many children missing out on a decent childhood and the number of children living in poverty is forecast to increase over the coming years as a result of the economic climate and cuts to welfare and services.'*

*National Children's Bureau: working with children, for children*

# Research

- A study published in 2022 found that increases in child poverty, fuelled by benefit cuts, was associated with more than 10,000 additional children being taken into care in the previous five years with 10,356 more children living in English local authority areas becoming 'looked after' than would have been the case had poverty levels remained at 2015 levels. It also estimates that almost 22,000 additional children were placed on child protection plans, and almost 52,000 began an episode of being 'in need'.

(Turner, A, Children, Social Work Leaders, 6/1/2022)

- The findings above added to 'growing evidence of the contributory causal nature of the relationship between child poverty and children's social care involvement' and concluded that there is a 'double burden on poorer areas'.

(The Lancet, Vol 7:6, June 2022 Child poverty and children entering care in England, 2015–20: a longitudinal ecological study at the local area level)

- Another study found increases in both child poverty and children's services interventions disproportionately affected poorer areas, particularly in the North East and said this placed a "double burden" of deprivation on these places.

(Sutherland, H. Can Childhood Poverty Be Abolished: Policy and Practice, Published online by Cambridge University Press 1/1/23)

- Policies that move children into poverty can trigger cascading inequalities through child protection systems and beyond, which consequently give rise to further inequalities in both health and life.

(Turner, A, Children, Social Work Leaders, 6/1/2022)

# A little history of us ...

Child poverty remains one of the biggest barriers to improving outcomes for young people in the UK today. There are too many children missing out on a decent childhood and the number of children living in poverty is forecast to increase over the coming years as a result of the economic climate and cuts to welfare and services.

During the pandemic, senior leaders at Newsham Primary identified and supported many families, who were struggling, in a host of ways.

Following the pandemic, we recognised the desperate need for support from an increased number of families and the community role in school escalated. Many families were supported.

In April 2022 Newsham Primary applied to be part a trial, initiated by the Government, to consider ways to prevent childhood poverty

# North of Tyne Combined Authority



## PROJECT

Child Poverty Prevention  
Programme



WE NEED  
A CHANGE

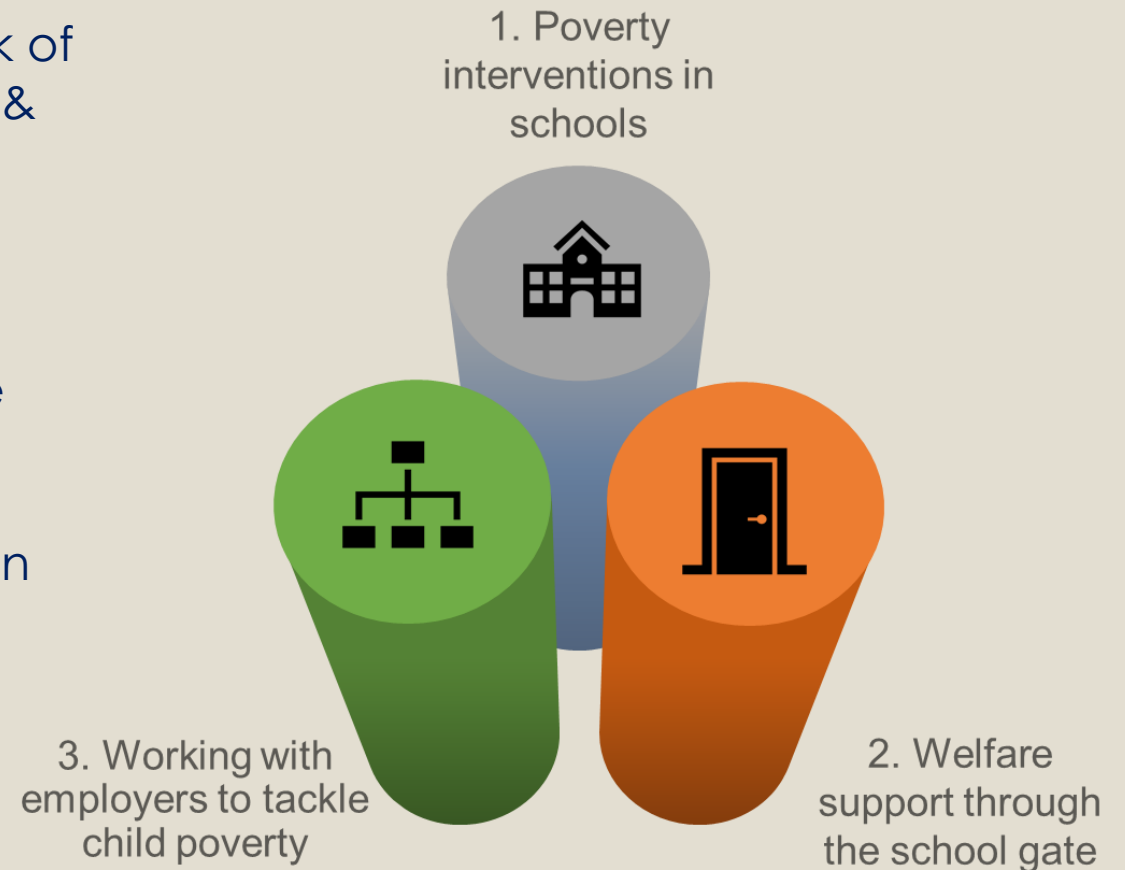
A photograph of a person holding a large, rectangular sign made of brown cardboard. The sign has the words "WE NEED" on the top line and "A CHANGE" on the bottom line, both written in large, bold, black, hand-drawn capital letters. The person's hands are visible at the top corners of the sign. The background is a blurred crowd of people at an outdoor event, with buildings and trees visible in the distance under a bright sky.

# Child Poverty Prevention Programme

- Over 25% of children in the North of Tyne combined Authority (NTCA) live in poverty. More than half of those children are in working households and are families without the financial resilience to cope with economic crisis.
- The NTCA funded initiative is aimed at helping to break the cycle of living in poverty; in turn this should reduce the need for much of the support we use so frequently at Newsham.
- Trial consists of 30 schools across three authorities; Newsham is one of 10 Northumberland schools selected to participate.
- Newsham has been chosen to be part of the Steering Group driving this initiative.

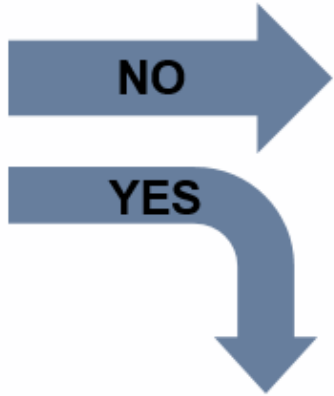
# Child Poverty Prevention Programme

- The programme builds on the established work of Local Authorities by extending good practice & enabling additional activity, which would otherwise not occur.
- This will provide evidence of how social and economic resilience work together to improve productivity within areas.
- Three pillars of work have been identified within the programme



# Pillar 1: Funding an innovative programme of poverty interventions in schools across the North of Tyne

## Framework of options







### Poverty Proofing the School Day

A powerful tool for identifying the barriers children living in poverty face to engaging fully with school life and its opportunities. Schools receive a thorough written report and action plan to inform impactful decision-making.

OR

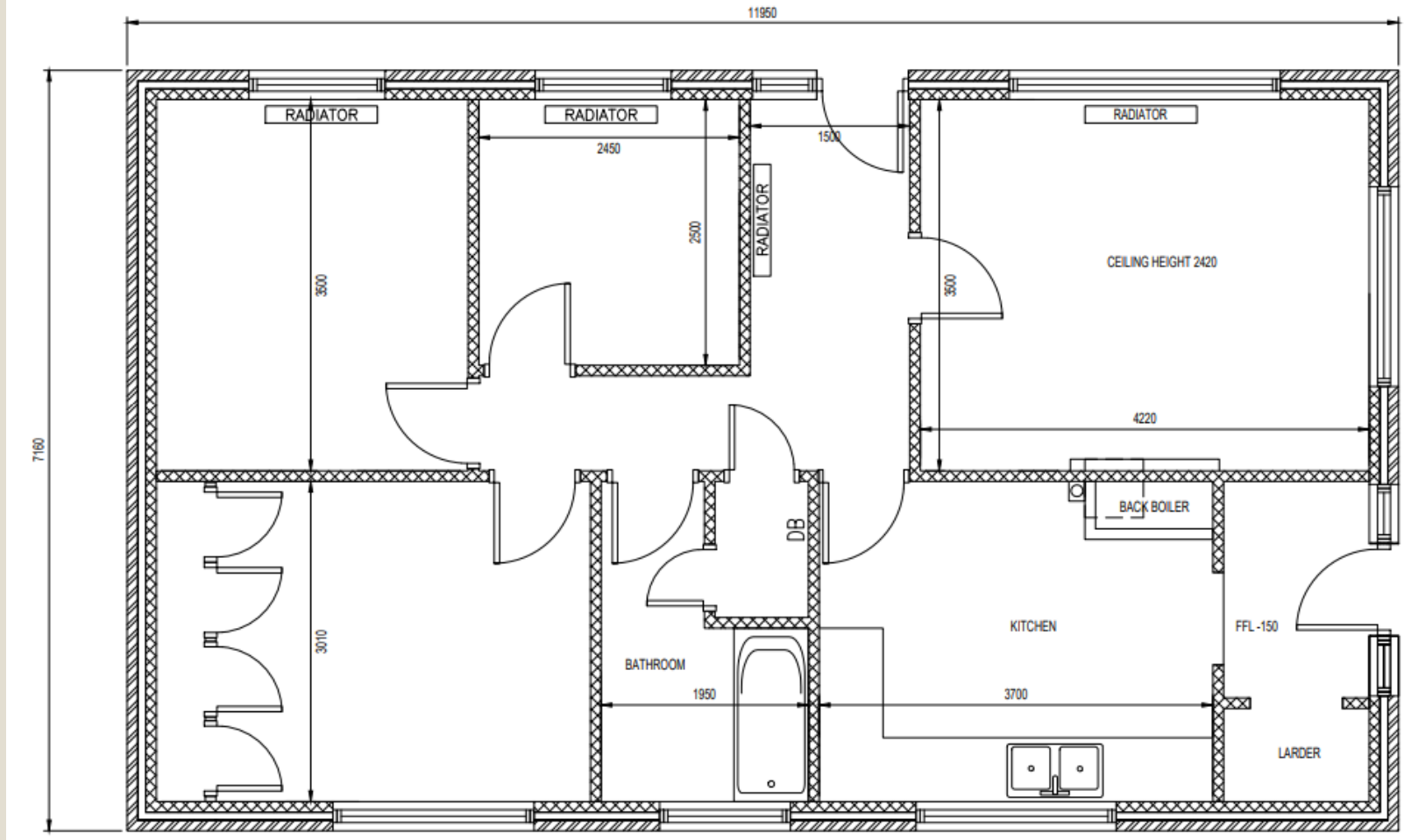
### A choice of one of the following funded poverty interventions

 <b>A: School uniform policy into practice</b> Independent review of policy and implementation of eco-uniform scheme	 <b>B: After school enrichment opportunities</b> After school club provision incorporating staff or volunteer CPD	 <b>C: Family learning programme</b> Slow cooker project & family finances	 <b>D: School community support role</b>
--	---	--	--



# **Child Poverty Prevention Programme: The Birth of a Community Hub!**

- **In Pillar 1 Newsham opted for School Community Support. A bid for funding to help towards funding this facility and staffing it in school was successful and a grant for £5k was received.**
- **The Caretakers bungalow was identified as a space for a Community Hub, although it is currently not fit for purpose.**
- **A charity (Lighthouse Community Hub) has been established to allow access to further funding. The trustees who established this with myself are:  
Vicar of St Bedes Church, Ian Flintoff  
Chair of the local residents association, Kirsty Greenacre  
Blyth Town Councillor, Warren Taylor  
Local business man, Shad Saleem**  
**These individuals have varying attributes and avenues of expertise which help strengthen the project.**
- **Plans have now been submitted to convert the existing building so that it is fit for purpose.**



EXISTING GROUND FLOOR PLAN

SCALE 1:50





EXISTING FRONT ELEVATION A-A

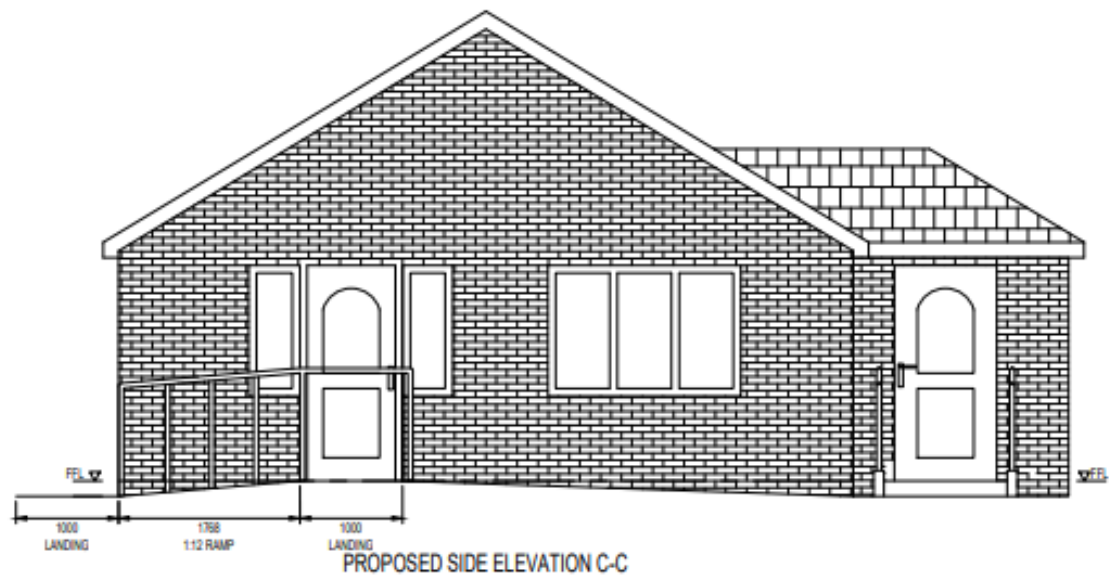
SCALE 1:50



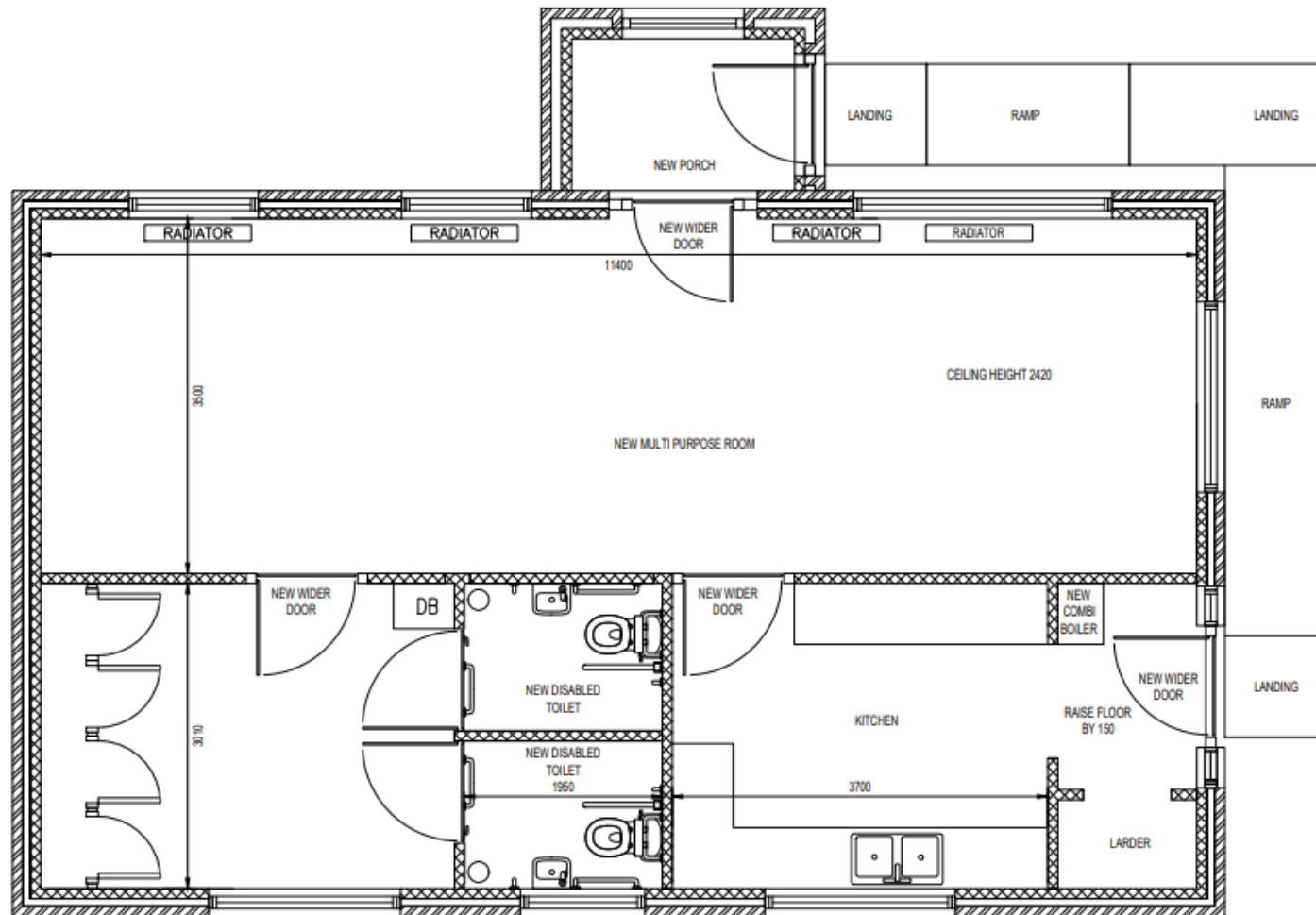
PROPOSED FRONT ELEVATION A-A



EXISTING SIDE ELEVATION C-C  
SCALE 1/50



PROPOSED SIDE ELEVATION C-C



PROPOSED GROUND FLOOR PLAN  
SCALE 1:50

NOTES

SCOPE OF WORKS

1. SPECIALIST CONTRACTOR TO REMOVE FASCIA AND SOFFITS THAT CONTAIN ASBESTOS, SEE ASBESTOS SURVEY.
2. BUILD PORCH, ACCESS RAMPS AND INSTALL WIDER DDA COMPLIANT DOORS.
3. UPGRADE BATHROOM TO 2 No. DDA COMPLIANT TOILETS.
4. UPGRADE ELECTRIC AND GAS FROM DOMESTIC TO COMMERCIAL. EXISTING DISBRIBUTION BOX TO BE UPGRADED AND RELOCATED. NEW COMBI BOILER AND CENTRAL HEATING SYSTEM. INSTALL NEW FIRE AND SMOKE ALARM SYSTEMS AS RECOMMENDED BY FIRE OFFICER. PROVIDE WIFI AND DATA PORTS. ASSESS EXISTING LIGHTING AND UPGRADE WHERE NECESSARY.
5. STRUCTURAL ENGINEER TO PROVIDE CONFIRMATION BEFORE REMOVAL OF ANY INTERNAL WALLS. CALCS REQUIRED FOR ANY STRUCTURAL WORKS.
6. MAKE A FLUSH FLOOR FINISH THROUGHOUT THE BUILDING.
7. REMOVE AND MAKE GOOD EXISTING FIREPLACE.
8. UPGRADE KITCHEN TO PROVIDE MORE WORK SURFACES AND SECOND OVEN.
9. MAKE GOOD ALL INTERNAL WALLS.
10. DECORATE THROUGHOUT

# Our journey to date

- **Family Learning**

Basic English and Maths sessions for adults, leading to a nationally recognised qualification; this will support them in seeking employment

- **Cooking from Scratch sessions**

Cookery sessions, including budgeting, to help adults learn to make cost effective, healthy nutritious meals.

- **Eco-Uniform Scheme**

Presenting the recycling of school uniform appears to have reduced the stigma associated with second hand clothes. It was hugely successful in July and we have built on this. The Eco-uniform scheme is now run by a parent; this is equipping her with skills and experience to help her in to employment

- **Citizen's Advice**

As part of another initiative, we are working with Citizens Advice 'Frontline referrals' to be able to provide immediate advice, support and signposting for families.

- **Community Allotment and Garden**

Launch of the community garden and community allotment; this will help families to experience first hand the benefits of growing their own produce. It promotes a healthy lifestyle through exercise, which results in improved mental health, and also the outcome of more tasty vegetables at a fraction of the cost. This is now promoted by social prescribers from two GP practices in Blyth.

- **Local Councillors**

Councillors Anna Watson, John Potts and Martin Robson now hold their surgeries from the Hub.

There was a consultation event in May where Cllr Watson consulted local residents on improvements they desire in their local area; this proved popular.

- **Partnership working**

Volunteers and the hub are working with local councillors on an initiative to improve the local area.

# Our journey to date...

- **Blyth Family Hub**

Discussions have commenced to explore the Lighthouse Community Hub becoming a satellite for Blyth Family Hub (previously SureStart), providing youth clubs together with a range of parenting groups.

- **Social Prescribers**

Social practitioners from local GP surgeries have approached us with a view to running groups from the hub.

- **Fundraising.**

- The family learning group have commenced their own fundraising; this is giving these individuals a real sense of purpose and responsibility. They are developing skills that will aid them in future employment.
- Grant funding application to allow commencement of structural alternations.
- Successful RISE funding application to establish a toddlers group. This will allow school to influence children from a younger age
- Support and funding from local councillors

# Future Plans

- Increase the offer of English and Maths to a greater number of families
- Provide varying levels of adult learning to help parents be able to support their children
- Establish a toddler group, youth group and social group for adults
- Establish community activities for all ages
- Provide in person welfare/housing/benefits/employment advice weekly
- Increase and broaden the provision offered
- Offer the hub as a warm space
- Upskill adults and volunteers so the hub can become more self sufficient

***All of this will undoubtedly enhance the life chances and aspirations for some of our most disadvantaged families***



# Successes so far

- From the group of 10 adults who have attended family learning sessions over the past year:
  - One has enrolled and is studying for a GCSE in maths
  - Three have secured employment
  - Two have secured interviews for permanent employment
- Over half of the group we have worked with have improved the life chances for themselves and their families in year 1 of this initiative.
- The community spirit and friendships that have developed between individuals – less isolation and new friendships are evident.
- More importantly for us is seeing the sense of purpose and increased confidence in these individuals who now believe in them selves.
- A request from North or Tyne Mayor Jamie Driscoll to visit for us to showcase the work we have done.

Just imagine how many lives could be impacted if we have increased space.....

# Lighthouse Community Hub

Pupil Premium Funding (*additional funding for publicly funded schools in England to raise the attainment of disadvantaged pupils of all abilities and to close the gaps between them and their peers*) does not fund any of the community work we are doing at Newsham. However, the work impacts significantly on the lives of some of our most disadvantaged and vulnerable pupils together with their families.

The Lighthouse Community Hub is increasing the life chances for some of our most disadvantaged local families and it is our aim to break the cycle for some of these families, many of whom are now experiencing third generation unemployment and poverty.